



REGIONAL SPECIALISED METEOROLOGICAL CENTRE-TROPICAL CYCLONES, NEW DELHI TROPICAL WEATHER OUTLOOK

DEMS-RSMC TROPICAL CYCLONES NEW DELHI DATED 04.05.2025

TROPICAL WEATHER OUTLOOK FOR THE NORTH INDIAN OCEAN (THE BAY OF BENGAL AND THE ARABIAN SEA) VALID FOR THE NEXT 168 HOURS ISSUED AT 0600 UTC OF 04.05.2025 BASED ON 0300 UTC OF 04.05.2025.

BAY OF BENGAL:

Scattered low and medium clouds with embedded intense to very intense convection lay over south Andaman Sea and west central Bay of Bengal. Scattered low and medium clouds with embedded isolated moderate to intense convection lay over rest Bay of Bengal.

*PROBABILITY OF CYCLOGENESIS (FORMATION OF DEPRESSION) DURING NEXT 168 HRS:

24 HOURS	24-48 HOURS	48-72 HOURS	72-96 HOURS	96-120 HOURS	120-144 HOURS	144-168 HOURS
NIL	NIL	NIL	NIL	NIL	NIL	NIL

*NOTE: EVERY 24HR FORECAST IS VALID UPTO 0300 UTC (0830 IST) OF NEXT DAY

ARABIAN SEA:

A fresh upper air cyclonic circulation formed over northeast Arabian Sea adjoining Gujarat coasts at 0.9 km above mean sea level at 0000 UTC of today the 04th May, 2025 and now it persisted over the same region at 0300 UTC of today, the 04th May, 2025.

Scattered low and medium clouds with embedded isolated moderate to intense convection lay over south Arabian Sea, Lakshadweep islands area, Comorin & Maldives area.

*PROBABILITY OF CYCLOGENESIS (FORMATION OF DEPRESSION) DURING NEXT 168 HRS:

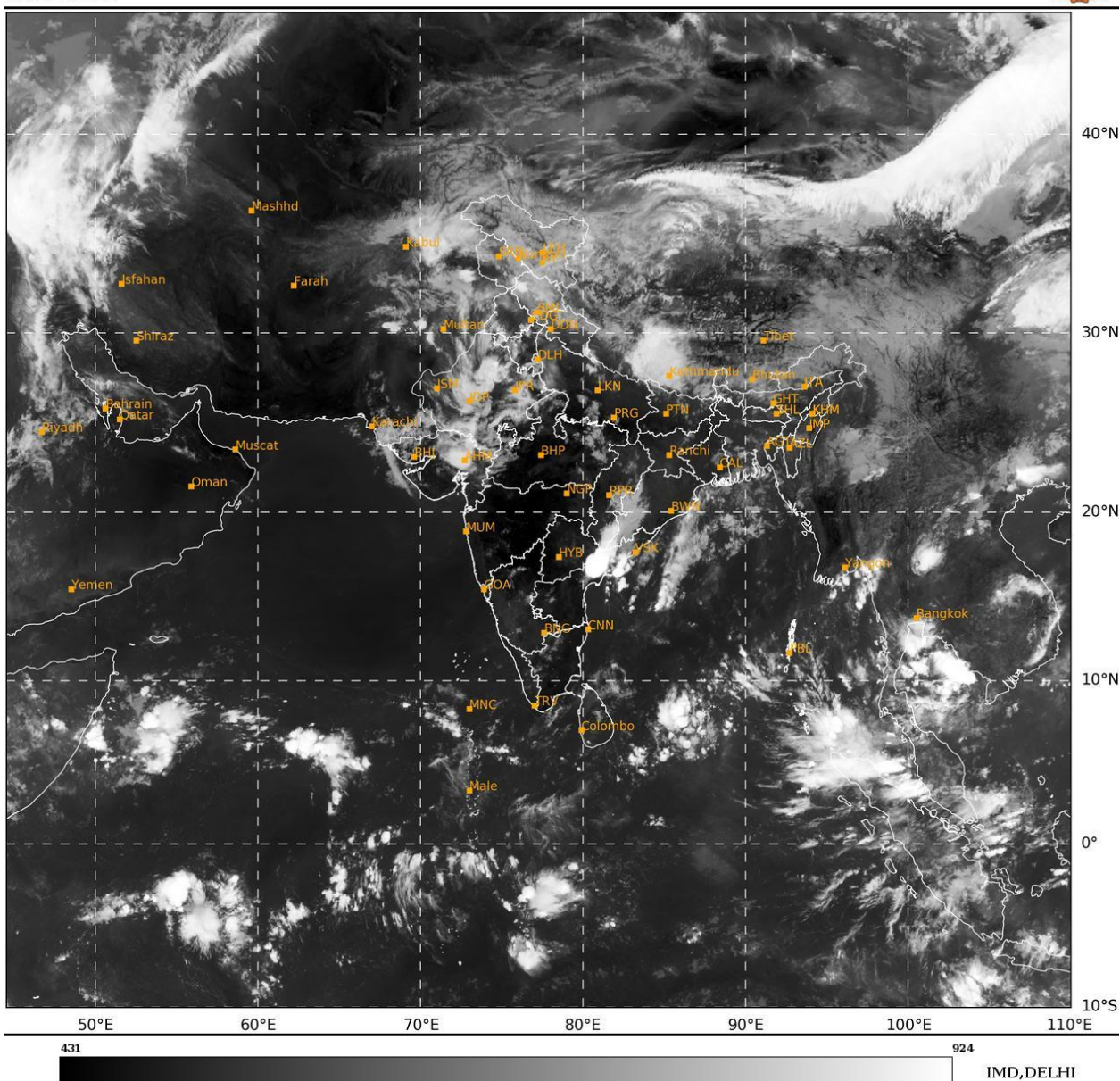
24 HOURS	24-48 HOURS	48-72 HOURS	72-96 HOURS	96-120 HOURS	120-144 HOURS	144-168 HOURS
NIL	NIL	NIL	NIL	NIL	NIL	NIL

*NOTE: EVERY 24HR FORECAST IS VALID UPTO 0300 UTC (0830 IST) OF NEXT DAY

REMARKS: NIL

SAT : INSAT-3DR IMG
 IMG_TIR1 10.8 um
 L1C Mercator

04-05-2025/(0315 to 0342) GMT
 04-05-2025/(0845 to 0912) IST



Cloud distribution: (a) Isolated: <25%, Scattered: 25-50%, Broken: 51-75%, Solid: >75%, Convection Intensity: (a) Weak: Cloud Top Temperature (CTT) > -25°C, (b) Moderate: CTT: -25°C to -40°C, (c) Intense: CTT: -41°C to -70°C and (d) Very Intense: Less than -70°C
 PROBABILITY OF CYCLOGENESIS (FORMATION OF DEPRESSION): NIL: 0%, LOW: 1-33%, MODERATE: 34-66% AND HIGH: 67-100%
 This is a guidance Bulletin for WMO/ESCAP Panel Member countries. Visit respective National websites for Country specific Bulletins